

## Purpose

This guide will provide steps on how to install Trusscore Wall&CeilingBoard panels in a shower enclosure to create a waterproof shower with a stylish design.

## Intended Application

Typically, showers are built using a one-piece plastic fitting or tile and grout to create a complete waterproof area. Made of PVC, Trusscore Wall&CeilingBoard can also be used to create waterproof shower walls. Incorporating the use of silicone to seal the seams between panels and trims will create a completely waterproof surface.

After the panels are installed, the surface will not only be completely water resistant but also easy to clean, which is important for showers. Trusscore Wall&CeilingBoard is resistant to chemicals, so using standard household cleaners to remove soap scum is a breeze. In addition, the panels will not support the growth of mold or mildew that are often found in shower spaces.

## Instructions

1. Start by installing a backer material, such as cement board on top of the substrate that will be behind the shower walls and ceiling.

Note: Installing plastic vapor barrier is generally not used unless the shower wall is on an exterior wall of the house and may be required by building code. Please check your local building codes for proper installation requirements.

2. Next, apply a liquid waterproof membrane on top the cement board. This will act as the water and vapor barrier to protect the materials behind the wall and ceiling. Allow adequate time for the waterproof membrane to dry.

Note: A waterproof cement board may also be used to act as the water/vapor barrier.

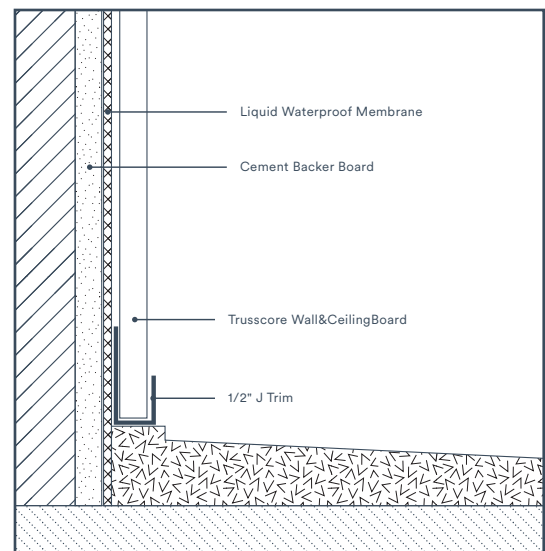


Figure 1

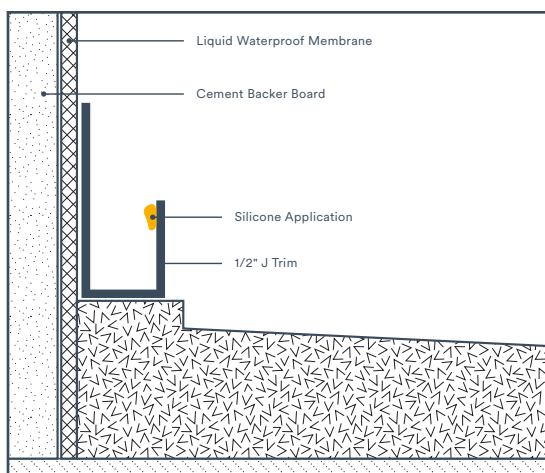


Figure 2

3. Install Trusscore Wall&CeilingBoard panels directly on top the cement board. Follow our [Trusscore Wall&CeilingBoard Installation Guide](#) for complete steps on how to install panels to cover the shower ceiling and walls.
4. It is highly recommended to install the Wall&CeilingBoard panels on the walls in a vertical orientation to allow for the best possible drainage.
5. Start installing panels from the inside corners of the shower and work outwards to make installing the last panels easier.
6. Before inserting any panels into trim, run a small bead of silicone approximately the thickness of a string of yarn, along the inside of the front facing edge of the J Trim extending the entire length of the panel and along each panel end.

## Instructions

- When installing subsequent panels, run a small bead of silicone, again, about the thickness of a string of yarn, along the tongue of the panel and insert the tongue into the groove of the previous panel. Press the panels firmly together to ensure a proper connection and wipe away any excess silicone.

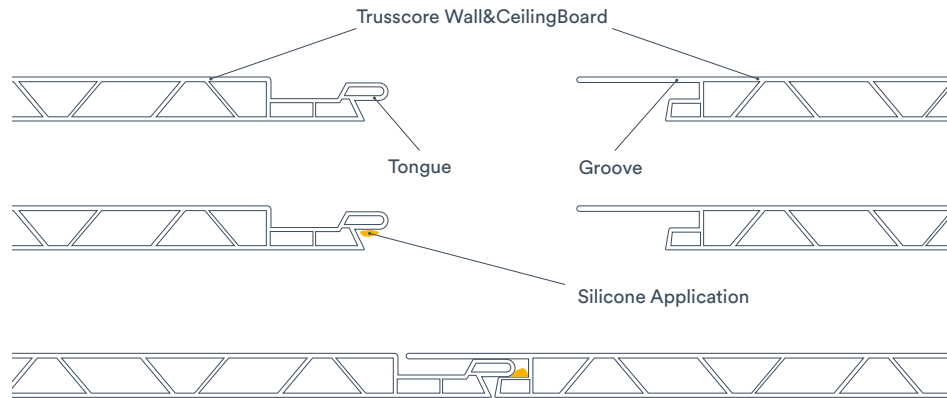


Figure 3

- After all ceiling or wall panels have been installed, run a small bead of silicone along the seam of the front facing edge of the J Trim where it meets the panels, along any corners, and other surfaces like floors.

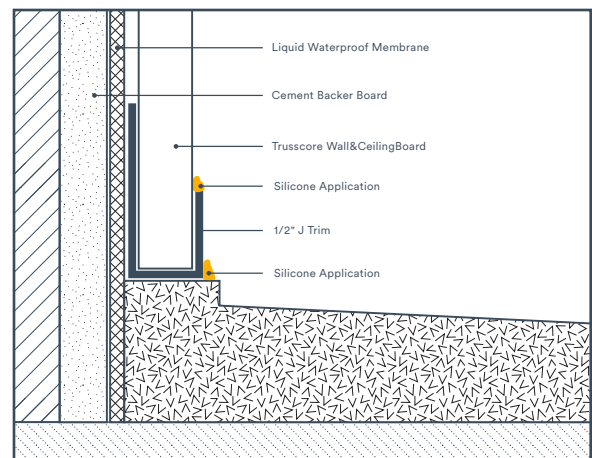


Figure 4

## Alternative Method (Optional)

- For increased water resistance, a **backer rod** with silicone sealant can be used.
- When installing the J Trim, leave a 1/4" gap between the bottom of the trim piece and any surface (i.e. wall, floor or ceiling).
- Install Trusscore Wall&CeilingBoard panels as directed in the Installation Guide.
- When finished installing panels, insert a backer rod into the gap between the J Trim and the surface and push it in just past the front facing edge of the J Trim.
- Add silicone to fill the gap in front of the backer rod and on any seams and corners as indicated above.

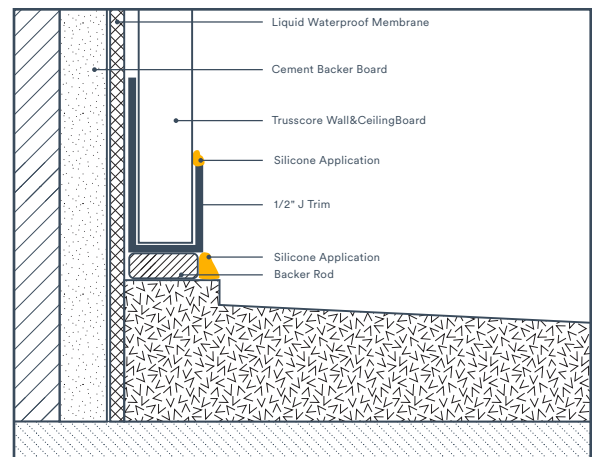


Figure 5