



Transform Your Modular Home & Prefabricated ADUs with **trusscore**

In the world of modular construction and prefabricated accessory dwelling units (ADUs), traditional wall and ceiling materials won't do — they're heavy, easy to damage, difficult to install, and create a lot of waste from project to project.

Trusscore Wall&CeilingBoard is the answer: Made from PVC, panels are lightweight, long-lasting, low-maintenance, easy to install, and can be recycled at the end of life.

It's everything you need for a modular unit from design to delivery and beyond.



Trusscore Wall&CeilingBoard™

Interlocking PVC panels for interior walls and ceiling

Available in 8, 10, 12, 14, 16, and 20ft lengths

Lightweight and low maintenance interior wall and ceiling panels that install with ease and provide a bright, clean finish in any space all while being waterproof and impact resistant.

- Available in white and gray
- Industry leading ½" thick panels with a unique internal truss design
- 16" wide panels match typical framing spacing
- Installs vertically or horizontally
- Lifetime warranty upon registration
- Class A fire rating (see page 2 for more information)

Get Product on Site in No Time

You can order Trusscore directly through a local retailer and have material on site within 48 hours. This translates to lower lead times, order volumes, and delivery costs for you.

No Extra Weight for Easy Shipping

The heavier your unit, the bigger headache you'll have during shipment. With a unique inner truss design, Trusscore panels weigh 40% less than drywall to lighten the load.

No Special Tools or Skills Required to Install

Pre-finished Trusscore panels install with screws — there's no mudding, taping, priming, or painting required, so anyone on your team can do it.

Avoid Wasting Product on Every Project

Trusscore offers custom product sizes to reduce material waste, however, off-cuts and excess pieces are 100% recyclable and can be recycled and reground to create new PVC products.

Deliver a Unit that Stands the Test of Time

Trusscore wall and ceiling panels are scratch, dent, and damage resistant, will never yellow or fade, and are mold and mildew resistant.

Trusscore & Code Compliance for ADUs

New buildings in Canada and the U.S. have to comply with building codes regardless of if they're site- or factory-built. Here are a few important things to note about Trusscore Wall&CeilingBoard to keep your units compliant:

Surface Burning Characteristics

Trusscore Wall&CeilingBoard has a "Class A" fire rating with a flame spread index of 10 and smoke developed index of 380, per CAN/ULC S102 and ASTM E84 testing.

Fire-Rated Wall Assemblies

Fire-resistant walls contain fire to a room and prevent it from spreading into an adjacent room for a designated time. Specific code requirements can vary based on a building's occupancy, use, and local building codes.

Trusscore Wall&CeilingBoard does not meet fire separation requirements for fire-rated assemblies.

If a fire-rated wall assembly is specified by code, Trusscore Wall&CeilingBoard must be installed on top of a fire-resistant material like gypsum board, fire-retardant-treated wood, or steel.

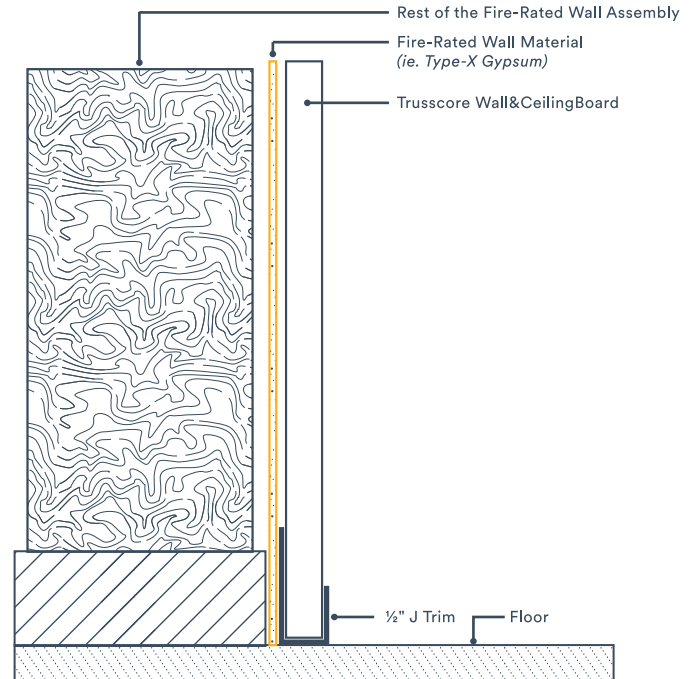
Thermal Barriers for Foam Insulation

In residential and commercial construction, thermal barriers protect against the combustible nature of foam insulation.

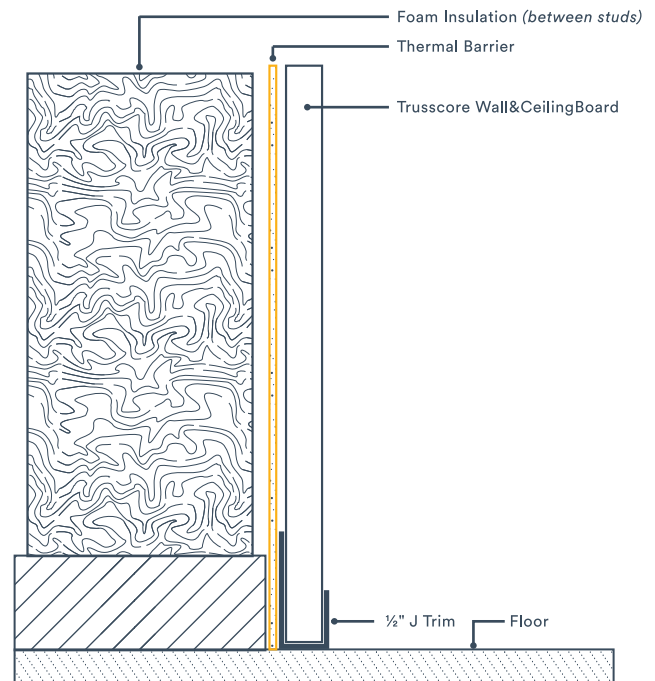
Trusscore Wall&CeilingBoard cannot be used as a substitute for a thermal barrier.

A thermal barrier like ½" gypsum board, plywood, OSB, metal sheeting, or intumescent or thermal coatings must be in place before you install Trusscore — this ensures compliance with safety regulations and enhances the fire resistance of the structure.

Fire-Rated Wall Assembly



Wall Assembly with Foam Insulation



Add Trusscore Wall&CeilingBoard to your ADU design today.

hello@trusscore.com | 1.888.418.4679

Copyright © 2024 Trusscore Inc. Trusscore and Trusscore Wall&CeilingBoard are trademarks of Trusscore Inc. Specifications are subject to change. T-AS108-001 01/2024

