

When preparing for the installation of Trusscore products in a construction or renovation project, detailed planning and documentation are key to ensuring that materials are accurately estimated and effectively used. The three core sections of our checklist includes the selection and specification of products, the precise location and application within the project, and the essential dimensional details required for accurate material estimation.

This checklist will guide you through confirming product types and configurations, detailing where each product will be used, and gathering all necessary dimensional information from floor plans, elevation plans, and reflected ceiling plans. This structured approach not only streamlines the estimation process but also assists in a seamless execution of the project.

1. Confirmation of Product Types and Configurations

Product Types

- Identify which Trusscore products will be used in the project i.e. Trusscore Wall&CeilingBoard, Trusscore SlatWall, NorLock by Trusscore, and RibCore by Trusscore

Note: Sizes of the products are not needed, unless there is a specific request, as sizes will be determined as part of the estimation process to determine optimal sizes to minimize waste and maximize installation efficiency.

Installation Orientation

- Installation orientation for each product type: vertical or horizontal

Required Trims

- List all the trims necessary for the installation of the Trusscore products i.e. corner trims, J trims, etc.

Colors

- Pick the colors for the products: white or gray

2. Location Specification of Trusscore Products

It is crucial to specify the exact locations where each Trusscore product will be installed to ensure a precise material takeoff and to guide the installation process. This information should be clearly noted on the project plans and drawings and confirmed within the finish schedule.

Plans and Drawings

The project plans (floor, elevation, and ceiling) must distinctly mark the areas where each type of Trusscore product will be applied. This may include:

- Highlighting on the floor plans the sections designated for Trusscore products
- Elevations should confirm wall heights where products will appear on walls and other vertical surfaces
- Reflected Ceiling Plans should confirm the use of Trusscore products for overhead applications

Finish Schedules

A finish schedule should be included with the plans. It should document:

- The type of Trusscore product used in each room or area and any additional finishing details, such as the orientation of the panels, color, and type of trim to be used
(See Diagram D - Finish Schedule)

Manual Highlighting or Marking

- Instances where the plans and drawings do not contain detailed information use color-coded highlighting or other markings to denote the placement of each Trusscore product
- Accompany these highlights with a legend or key to clarify the product types and their respective locations

Documentation Consistency

- Ensure that the information on the physical locations of Trusscore products in the plans and drawings matches the finish schedule and any additional documentation
- Any discrepancies should be resolved before the submission of the material takeoff to avoid confusion or delays

3. Dimensional Confirmation for Trusscore Product Estimation

Precise dimensions are fundamental for the accurate estimation of Trusscore products. It's imperative that floor plans, elevation plans, and reflected ceiling plans (RCPs) include detailed measurements and scales for all areas where the products will be installed. Each type of plan serves a specific purpose in providing these crucial dimensions.

Floor Plans

- Floor plans are the blueprint of the space, detailing the layout of walls, rooms, and other elements on a horizontal plane *(See Diagram A - Floor Plan)*
- They should clearly indicate the length and width of each space where Trusscore products are to be applied, ensuring that the area of product coverage is correctly calculated

Elevation Plans

- Elevation plans (or sections) depict the vertical components of spaces, showing the facade or interior walls as if standing directly in front
- These plans should confirm the heights of walls and any vertical spaces to accurately assess the quantity of Trusscore products required
(See Diagram C - Elevation Plan)

Reflected Ceiling Plans (RCPs)

- RCPs provide a view of the ceiling as if it were reflected onto a mirror on the floor, showing ceiling elements and structure (See Diagram B - Reflected Ceiling Plan)
- They should detail ceiling surface measurements and the orientation of any joists or framing structures that may affect the installation of Trusscore products

Document Compilation

- All relevant plans and schedules should be compiled cohesively to provide a comprehensive view of the project's dimensional requirements for Trusscore products
- Ensure that the measurements and scales are consistent across all documents to prevent any misinterpretation

Additional Plans and Details

Windows and Door Schedules

- These schedules are necessary for accurate estimation as they impact the quantity and placement of Trusscore products around these openings
- Types and sizes of windows and doors should be clearly listed, along with their locations on both floor and elevation plans

Backloading

- Should there be any concerns regarding the weight of the ceiling assembly (e.g. insulation) and the ability of Trusscore panels

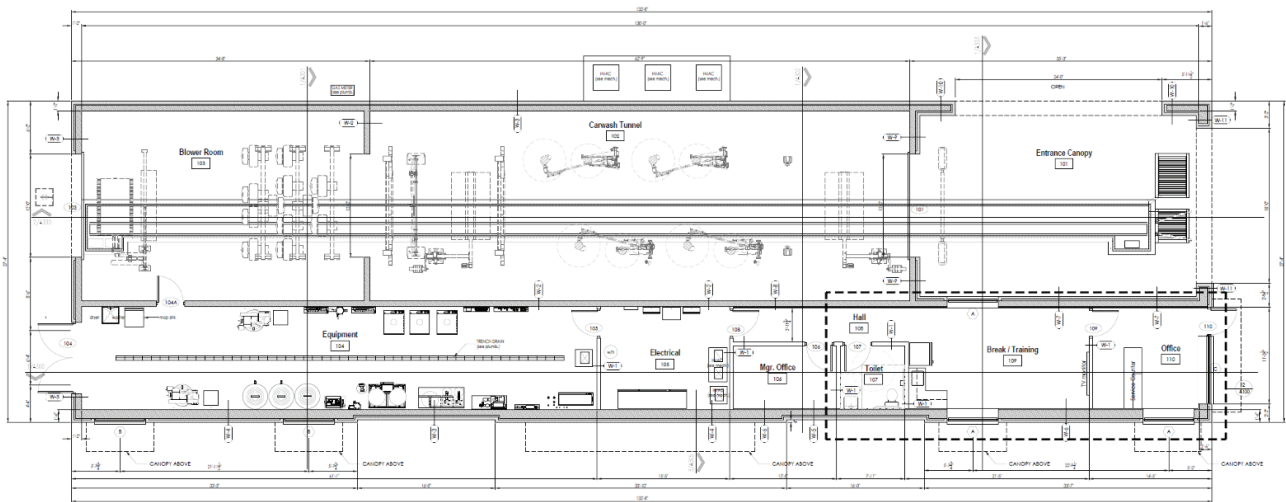
Cross Referencing

- Cross-reference all plans to verify that dimensions align correctly. Discrepancies between plans should be addressed to avoid errors in product estimation

Annotating and Detailing

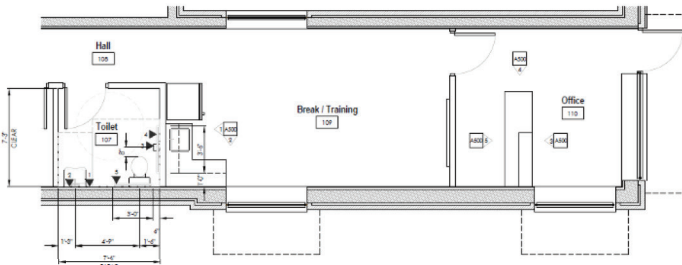
- Annotate any unique or non-standard dimensions and provide additional details where standard dimensions do not apply
- Include notes on plans for any custom cuts or adjustments needed to fit Trusscore products around irregular spaces or features
- By confirming the dimensions across all relevant plans and details, you lay the groundwork for an accurate and efficient material takeoff, ultimately leading to a smooth installation process of Trusscore products to withhold this weight without deflection information should be included confirming weights Trusscore panels will be subjected to

Adherence to this checklist for information required to estimate Trusscore products will ensure accurate and timely estimations can be conducted.



1 Floor Plan
SCALE 1/8" = 1'-0"

ACCESSORY LEGEND:



2 Enlarged Plan
SCALE 1/4" = 1'-0"

PARTITION TYPES	
1001	2x4 WOOD STUDS @ 16\"/>
1002	8\"/>
1003	8\"/>
1004	8\"/>
1005	8\"/>
1006	8\"/>
1007	8\"/>
1008	8\"/>
1009	8\"/>
1010	8\"/>
1011	8\"/>

Example: Diagram A - Floor Plan

