

DAIRY

The Premier Wall & Ceiling Solution For Your Dairy

Dairy farmers know the problem areas in their barn because they've had to repair them several times. It's time to choose a future-proof material that reduces the time and money spent on repairs that come with inferior products like FRP, glass board, concrete, plywood, and OSB. It's time to choose Trusscore.

Trusscore wall, ceiling, and penning products are built to last for all your dairy farm's needs. No other product combines this level of durability, ease of installation, speed of repair, and superior lifespan performance in demanding, wet, and harsh environments.

Trusscore products are a cost-effective solution used by some of the top dairy farms in North America.

“ Trusscore is easy to clean. That's very convenient for us. It makes cleaning quick and easier and less costly, thanks to the nature of the product itself. ”
– Roddy Purser
Owner of White Rock Farms dairy, North Carolina, USA

Applications

Trusscore products are an ideal wall, ceiling, and containment material for facilities on a dairy farm that require a sanitary environment that's durable and easy to keep clean. These facilities include:

- Parlor and robot rooms
- Milk and tank rooms
- Holding pens, calf penning, and containment
- Observation rooms, offices, supply rooms, break rooms, and kitchens
- On-farm processing, creameries, and packaging facilities

Why Choose Trusscore?



Superior Durability and Material Longevity

Future-proof your facility for generations to come. Trusscore products are built to last and backed by an extended lifetime warranty. Trusscore PVC panels have a high strength-to-weight ratio, are impact-resistant and stand up to cleaning chemicals and repeated pressure washings — even from a fire hose.



Enhanced Biosecurity

Keeping your dairy disease-free is critical for productivity, profitability, and herd health. The smooth, non-porous finish of Trusscore panels is easily cleaned and disinfected, and helps prevent bacteria, mold, and virus growth. Trusscore products are FDA, USDA CFIA, and cGMP compliant.



Water Resistant

Moisture in the air or water on the surface easily eats away at other materials like FRP, concrete, plywood, and OSB. With Trusscore, you can wash everything down, worry-free! The panels are inert and impervious to water, meaning they will never support mold or mildew growth.



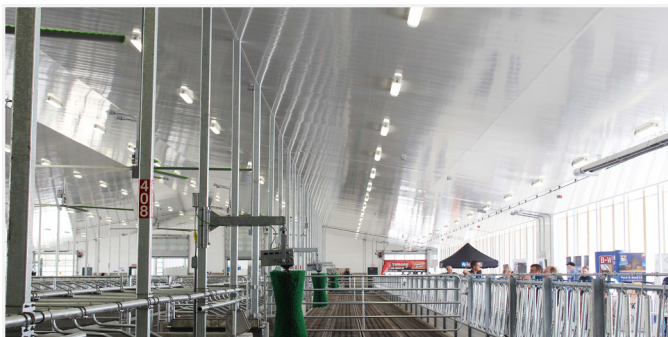
Quick and Easy to Install

The interlocking tongue & groove design of Trusscore wall and ceiling panels means it installs quicker than alternatives, saving you time and money. Plus, your dairy operations don't stop for anything, so why should you? Damaged panels are a rarity but can be quickly replaced — meaning little-to-no downtime for your operations.



Parlor and Robot Rooms

Designed to keep your facilities clean with minimal maintenance



Whether you have a herringbone, tandem, robotic milking or rotary parlor layout, there's one clear choice for the surrounding ceiling and walls. Protect your investment by choosing durable, water-resistant Trusscore Wall&CeilingBoard panels for all load bearing walls and ceilings. They're low-maintenance and can handle repeated pressure washing while withstanding harsh gases and moisture in the air.

Panels are lightweight, easy to install, and a damaged panel can be swapped out in a matter of minutes – meaning zero down-time for your operations. Plus, when it comes time for inspection, you'll be confident your space is sanitary because of the easy-to-clean, hygienic, and antibacterial properties of Trusscore Wall&CeilingBoard.

Even the surfaces of your robot room are frequently washed down, so let your walls and ceiling help you in that effort by installing Trusscore Wall&CeilingBoard — PVC panels that interlock tightly, are resistant to chemicals and moisture, and are FDA, USDA, and CFIA compliant.

Milk and Tank Rooms

Since milk must be protected from contamination during transfer and storage, bulk tanks and transfer equipment must be cleaned frequently. If Trusscore Wall&CeilingBoard isn't covering your milk/tank room ceiling and walls, how can you be sure that the environment meets sanitary requirements? With alternatives like glass board, steel, or FRP, your space is at risk from contamination.

Protect your yield and your investment by making it easy to keep the room clean and sanitary. Trusscore Wall&CeilingBoard allows you to keep your milk and tank room clean, disease- and mold-free, and will consistently stand up to repeated cleanings and chemical use.



Holding Pens



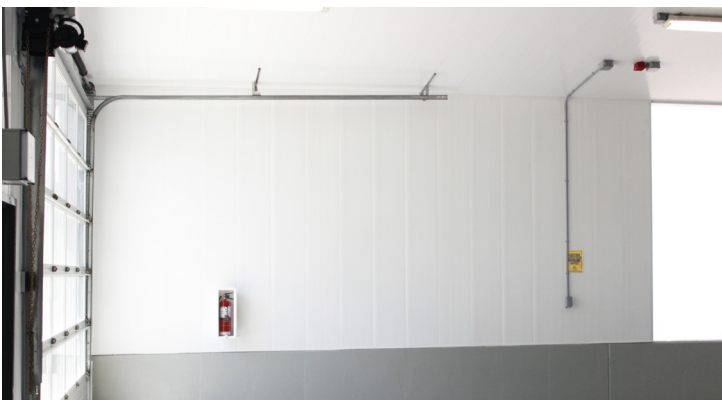
Even when minimizing the amount of time your herd spends in their holding pen, sanitary conditions can deteriorate quickly. Lining your holding pen walls with water-resistant Trusscore Wall&CeilingBoard lets you wash everything down quickly without fear of lingering mold or bacteria.

Calf Penning



NorLock by Trusscore are freestanding interlocking divider planks that are strong and durable, while also being smooth and easy to keep clean — the perfect calf penning solution.

Containment, Handling, Loadout Areas, and Chutes



NorLock by Trusscore provides the strength and durability required to contain and corral a herd when used as cladding and combined with a stable, secure structure such as metal or concrete. NorLock panels are resilient, rigid, and feature a smooth, water-resistant surface that makes maintenance a breeze and is safe for contact with your cattle.

More Applications

Trust Trusscore Wall&CeilingBoard, Trusscore SlatWall, and NorLock by Trusscore for other key spaces in your dairy facilities.

- On-farm processing and creameries
- Packaging facilities
- Observation rooms and agri-tourism
- Offices
- Supply rooms
- Break rooms and kitchens



From Parlor to Processing: You can always count on Trusscore products

Trusscore Wall&CeilingBoard

PVC wall and ceiling panels that are easy to clean, low-maintenance, and abuse-resistant

Use for: Walls and ceilings in parlors, robot rooms, milk/tank rooms, observation rooms, holding pens, and other facility areas like offices, kitchens and supply/storage areas.

- Will not support the growth of harmful microbials such as mold or mildew, viruses, and bacteria
- Industry leading ½ inch thick panel combined with unique inner truss design
- Pre-punched screw flange with hidden fasteners
- Meets CFIA (Canada) and FDA & USDA (US) approval requirements for walls and ceilings
- Flame Spread Classification of 10 in Canada, per CAN/ULC S102 and 5 in USA, per ASTM E84



NorLock by Trusscore

Non-load bearing partition wall planks uniquely designed for superior strength, low-maintenance, and durability

Use for: Calf penning and containment, aisle gates, and building non-loading bearing walls to separate areas

- Will not support the growth of harmful microbials such as mold or mildew, viruses, and bacteria
- Tight fitting tongue-and-groove with no external support necessary
- High-impact strength
- Meets CFIA (Canada) and FDA & USDA (US) approval requirements for walls and ceilings
- Flame Spread Classification of 10 in Canada, per CAN/ULC S102 and 5 in USA, per ASTM E84

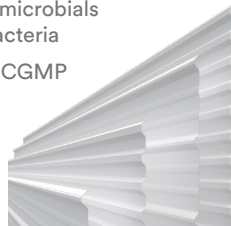


RibCore by Trusscore

High-strength PVC corrugated panels

Use for: Walls and ceilings in many areas of your dairy facility such as parlor rooms, holding pens, observation rooms, and more

- Will not support the growth of harmful microbials such as mold or mildew, viruses, and bacteria
- Compliant with USDA/FDA, CFIA, and CGMP requirement for use in food production and processing facilities
- Easily cleaned – pressure washable



Trusscore SlatWall

A wall storage system that adds storage capacity and organization to any space

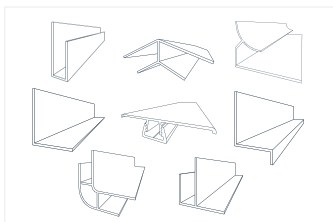
Use for: Wall organization in robot rooms, storage, equipment and supply rooms, break rooms, kitchens, and observation rooms

- Integrates seamlessly with Trusscore Wall&CeilingBoard
- High-strength storage supports up to 75 lbs per square foot
- Pre-punched nailing flange with hidden fasteners



Trusscore Trims and NorLock Accessories

Complete your project and add the flexibility of hinged doors and enclose the cut ends of panels, to keep dirt, rodents, and insects out of the panels.



Trims

Visit trusscore.com/trims for full range of trims and accessories available.



Drop Rod & Drop Rod End

Use to create a hinged door with NorLock panels



Top Cap

Use to cap the top of a NorLock wall with a flat surface



End Cap

Use to enclose the cut ends of NorLock panels

Want to learn more about how Trusscore can improve your dairy facilities?
Start the conversation today with one of our sales representatives.

hello@trusscore.com | 1.888.418.4679 | trusscore.com

Copyright © 2021 Trusscore Inc. Trusscore, Trusscore Wall&CeilingBoard, Trusscore SlatWall, RibCore by Trusscore, and NorLock by Trusscore are trademarks of Trusscore Inc. Specifications are subject to change. T-AS105-002 11/2021

trusscore
material + science