

Purpose

This guide provides installation recommendations when installing Trusscore products in applications where epoxy flooring is also used.

Recommendation

It is not recommended that epoxy flooring products be directly applied to any Trusscore products, including Trusscore Wall&CeilingBoard. Differences in the natural rates of expansion and contraction of both the epoxy and the Trusscore material will negatively impact both products, and ultimately the longevity of the installation itself.

We recommend two options depending upon the requirements of your application and aesthetic preference.

Option 1

Install epoxy floor coating per manufacturer directions prior to the installation of Trusscore products. Once installed, Trusscore products may be installed flush to the top of the cured epoxy floor, per [Trusscore installation instructions](#).

See **Figure 1** for an example that captures this configuration.

1. For increased water resistance, a [backer rod](#) with silicone sealant can be used.
2. When installing the J Trim, leave a 1/4" gap between the bottom of the trim piece and the epoxy floor.
3. Install Trusscore Wall&CeilingBoard panels as directed in the Installation Guide.
4. When finished installing panels, insert a backer rod into the gap between the J Trim and the epoxy floor and push it in just past the front facing edge of the J Trim.
5. Add silicone to fill the gap in front of the backer rod to complete the installation.

Option 2

Install Trusscore Wall&CeilingBoard panels and trims per [installation directions](#) before installing the epoxy flooring, ensuring a gap of 3" to 4" is left above the intended finished floor height. In this gap, install 3/8" plywood, OSB, or other low-expansion products to form the base of the wall assembly.

Once completed, install the epoxy floor per manufacturer instructions; roll the epoxy up the base of the wall assembly to create a flush surface where it meets the installed Trusscore material.

See **Figure 2** for an example that captures this configuration.

An *alternative to this method* involves installing a Trusscore Base Trim piece at the bottom of the wall assembly to act as a drip edge.

1. Prior to installing any Wall&CeilingBoard panels or other trims, install Base Trim at the base of the wall assembly and then install the J Trim on top the Base Trim and run a small bead of silicone along the gap where the two trims meet.
2. You may also forego the J Trim if desired and run the bead of silicone directly along the bottom of the panels where they meet the Base Trim.
3. Ensure the epoxy is applied up the base of the wall and packed tightly under the drip edge of the Base Trim.

See **Figure 3** for an example that captures this configuration.

Figure 1

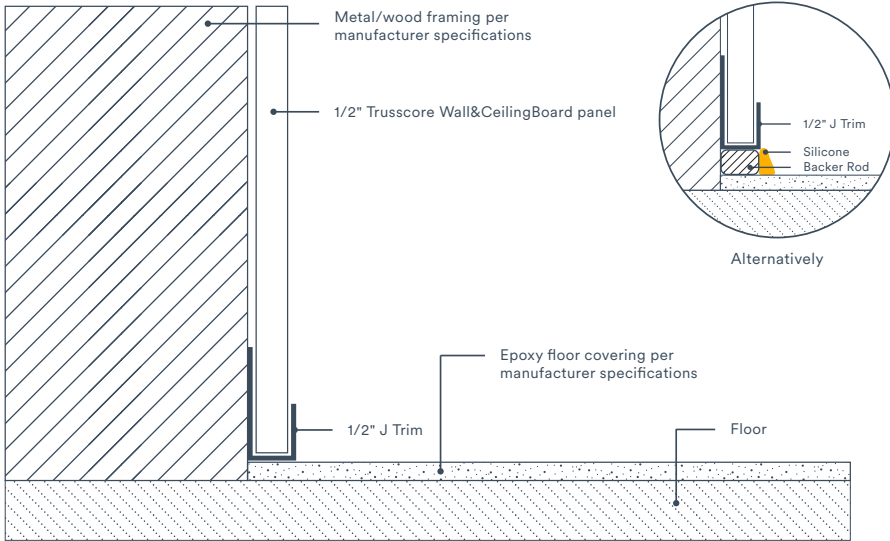


Figure 2

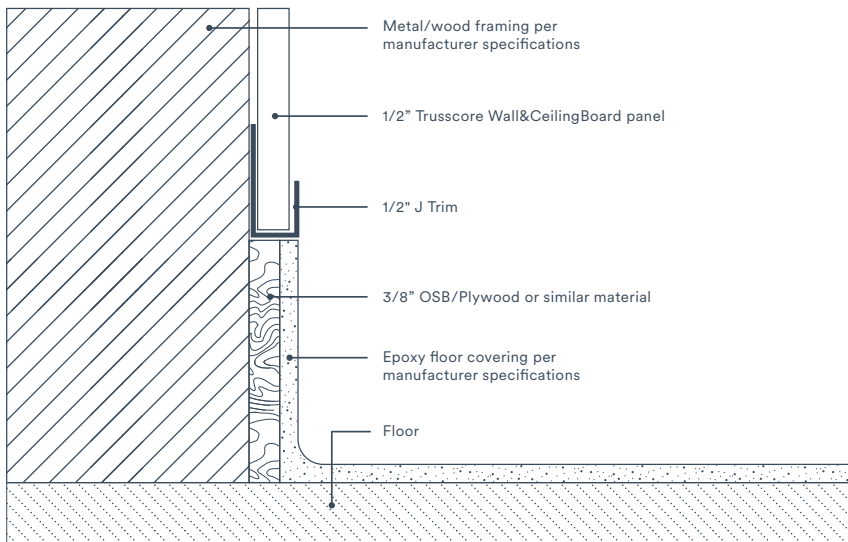


Figure 3

